

iRobot®

Roomba® Vacuuming Robot

600 Series

Regular Robot Care

Recommended Robot Care

To keep Roomba running at peak performance, perform the following care procedures. Instructional care videos can also be viewed in the iRobot HOME App. If you notice Roomba picking up less debris from your floor, then empty the bin, clean the filter, and clean the extractors.

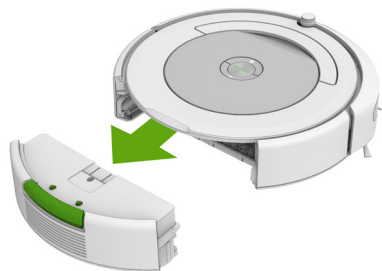
Robot Part	Care Frequency	Replacement Frequency
Bin	After each use	-
Filter	Once per week (twice per week in homes with pets)	Every 2 months
Brushes	Once per week (twice per week in homes with pets)	Every 6-12 months
Front Castor Wheel	Once every two weeks	Every 12 months
Side Brush Cliff Sensors Charging Contacts	Once per month	



Note: iRobot manufactures various replacement parts and assemblies. You may purchase replacement parts through the iRobot HOME App or by visiting www.irobot.com/Roomba600. If you think you need a replacement part, please contact iRobot Customer Care for more information.

Emptying the Bin

- 1 Press the bin release button and pull to remove the bin.



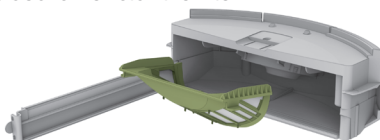
- 2 Open the bin door to empty the bin.



Cleaning The Filter

- Important:** Empty the bin before cleaning the filter.

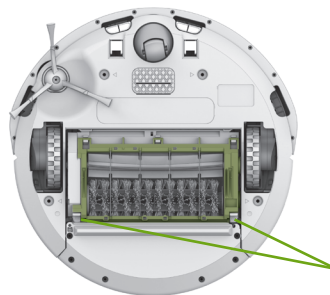
Pull the filter to remove it. Tap the filter against the side of your household waste bin to clear the debris. Reinstall the filter.



Replace the filter every two months

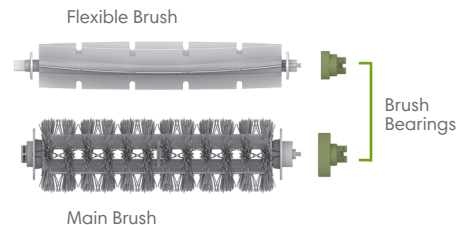
Cleaning the Brushes

- 1 Open the brush guard by lifting both tabs.



Brush Frame
Release Tabs

- 2 Remove and clean any hair and debris from the brushes and brush bearings.

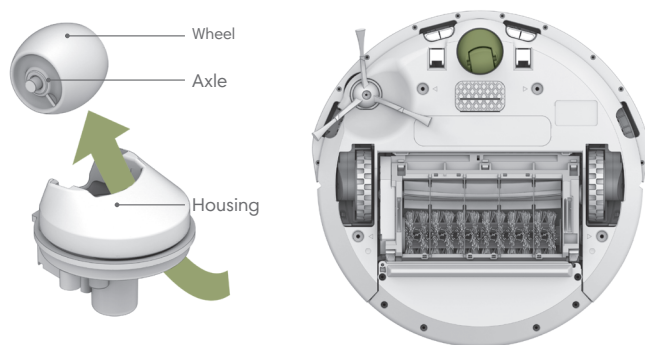



- 3 Reinstall the brush bearings and brushes, then close the brush guard.

Replace the brushes every 6-12 months

Cleaning the Front Castor Wheel

- 1 Pull firmly on the front wheel to remove it from the front castor assembly.
- 2 Remove any debris from inside the wheel cavity.
- 3 Spin the wheel by hand. If the rotation is restricted, remove the wheel from its housing and push firmly to remove the axle and clear any debris or hair wrapped around it.
- 4 Reinstall all parts when finished. Make sure the wheel clicks back into place.



 **Important:** A front wheel clogged with hair and debris could result in floor damage.

Cleaning the Cliff Sensors and Charging Contacts

Wipe all sensors and charging contacts with a clean, dry cloth.



Cleaning the Side Brush

Use a small screwdriver to remove the screw. Pull the side brush to remove it from the robot. Remove any hair and/or debris and reinstall the side brush.

